



RUST SUCKS!

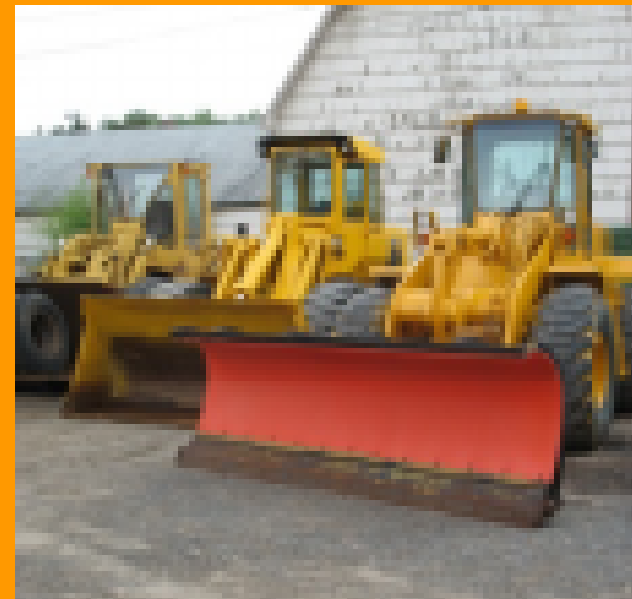
Slide 1

EOM1

Mac, 9/10/2010

Meet the Experts





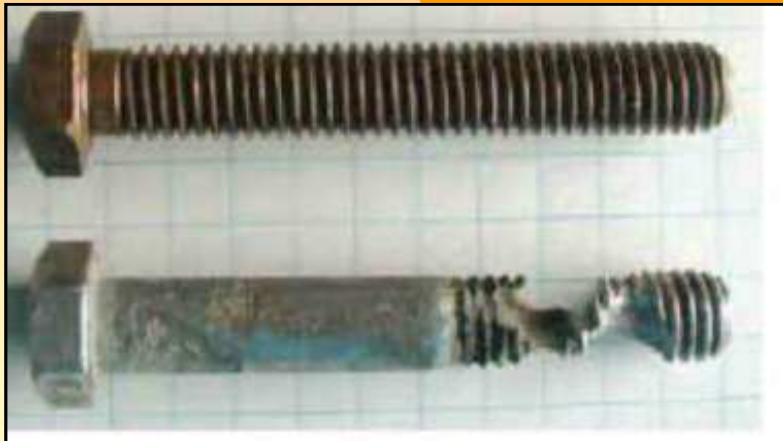
TYPES OF CORROSION



Galvanic



Pitting

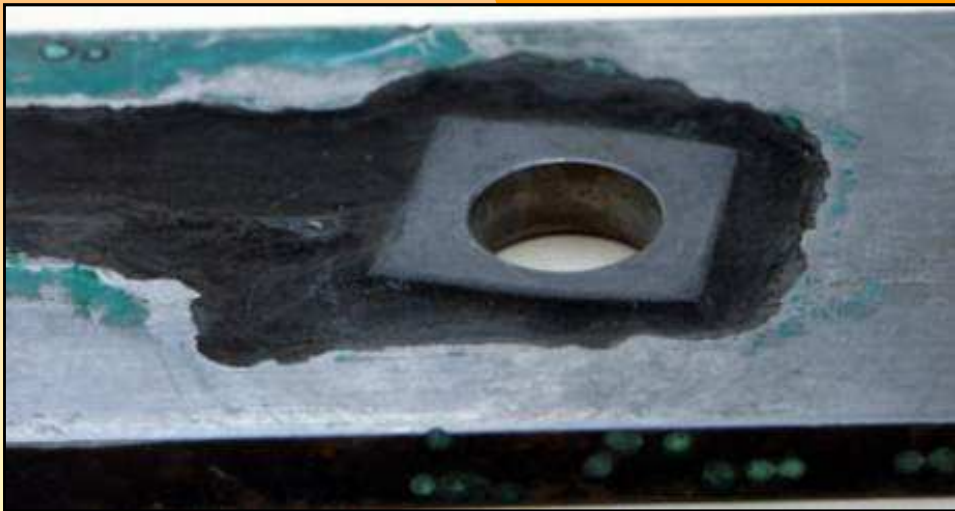


Crevice

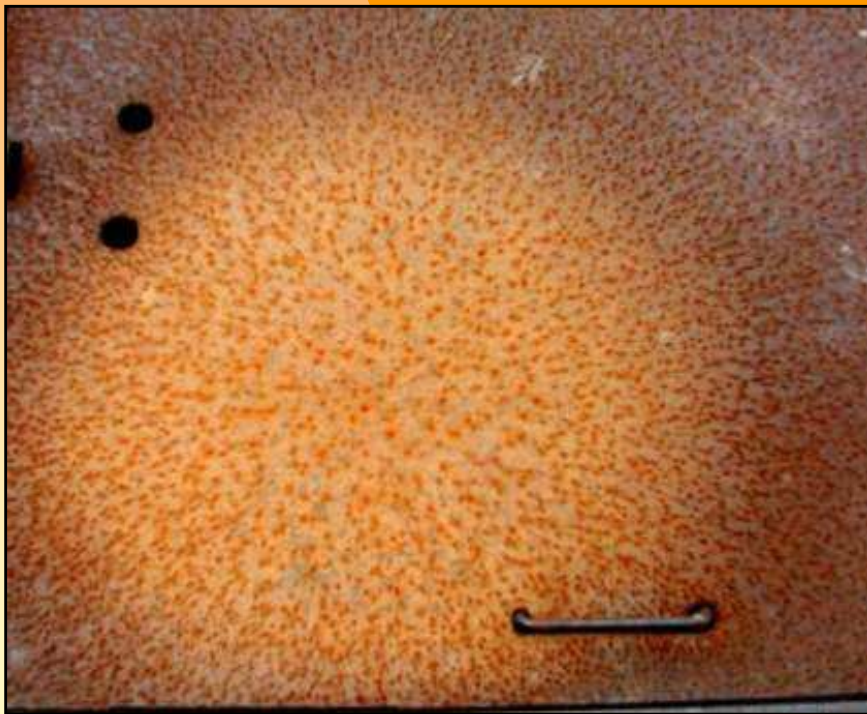
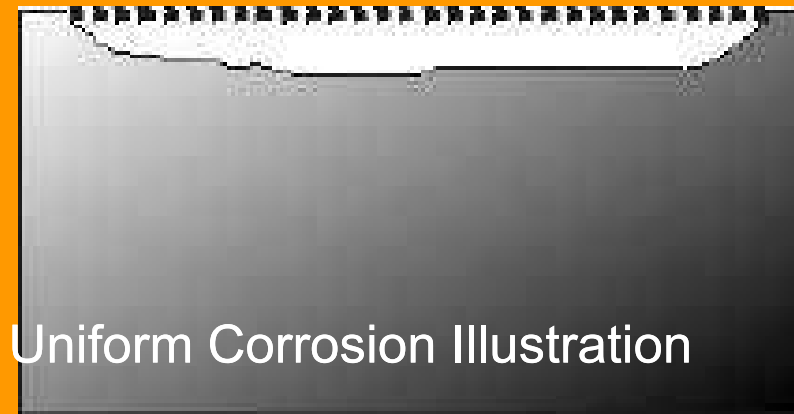


Uniform

Galvanic Corrosion



Uniform Corrosion

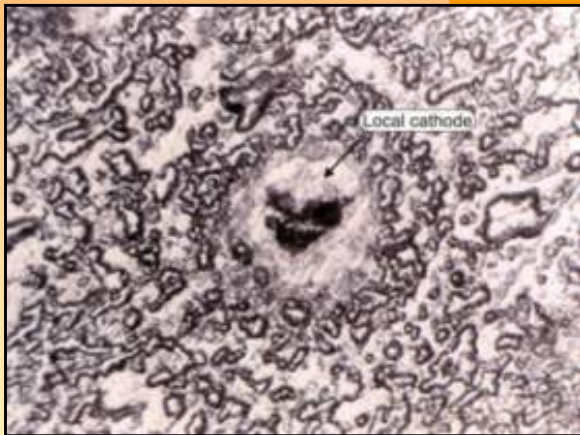


Look Familiar?



**Weathering Steel
Corrosion**

Pit Corrosion



Pit Corrosion



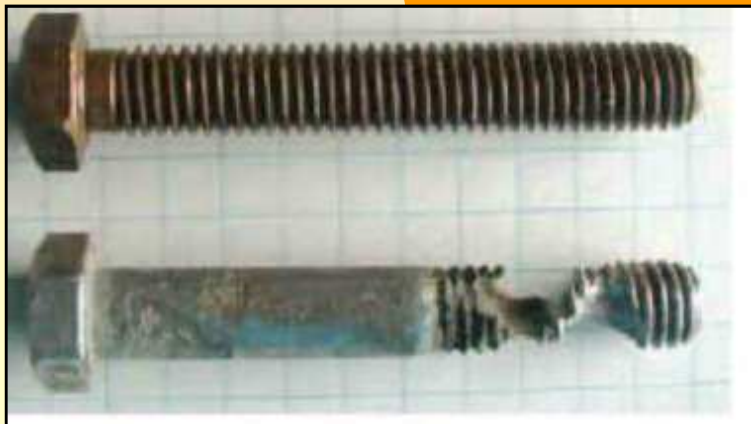
Pit Corrosion in a gas line



Aluminum Pitting

Crevice Corrosion

Crevice Corrosion Illustration



What can you do?



Galvanic



Pitting



Crevice



Uniform

Figuring it out?



First Line of Defense



Second Line of Defense



PAINITNG PROCESS



***Good Surface
Preparation Provides
the Foundation
Essential
for Optimum
Paint Performance***

TYPES OF CLEANING

Mechanical

Solvent

Chemical

MECHANICAL CLEANING



Before Shot Blast



Blow Off



Before Shot Blast



After Shot Blast

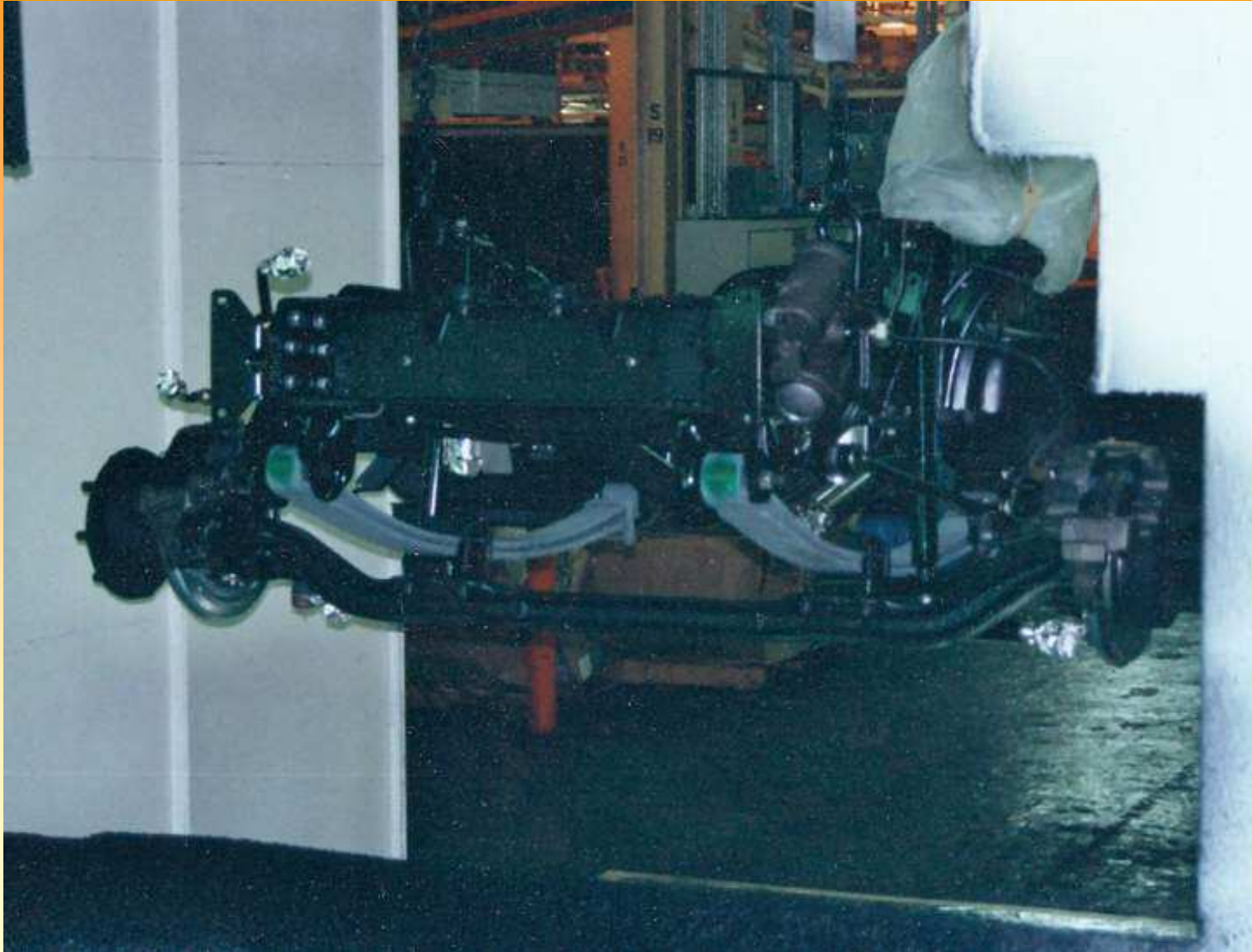
CHEMICAL CLEANING



SOLVENT WIPE PREPARATION



OEM PROCESSING



BODY BUILDERS



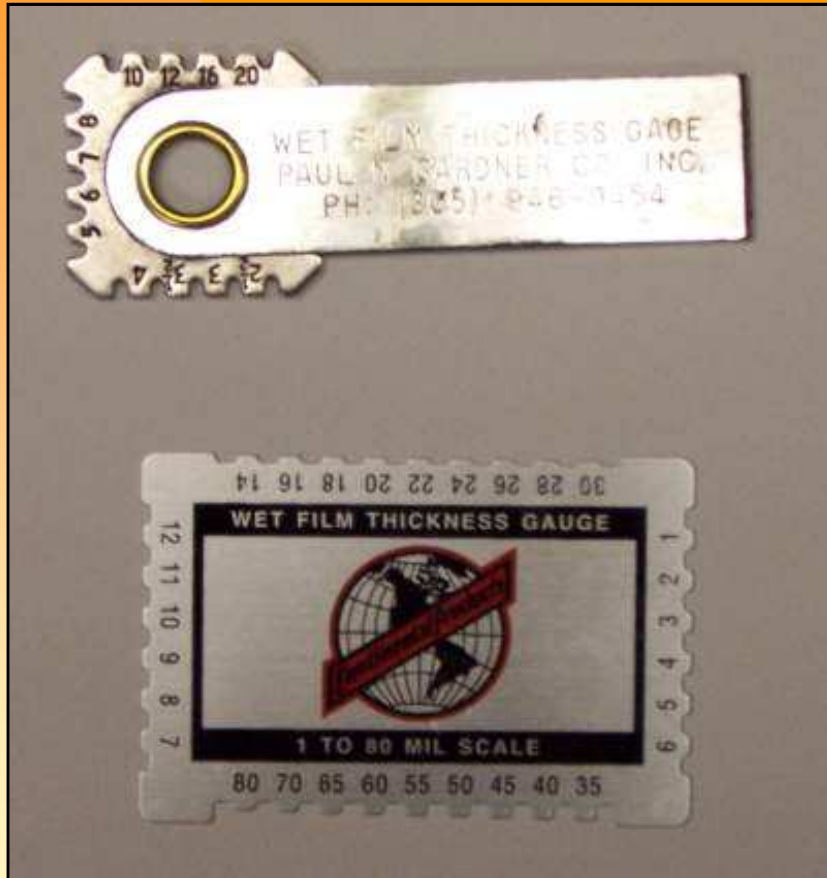
PAINTING SYSTEM

Surface Preparation

Primer

Top Coat

MIL GAUGES



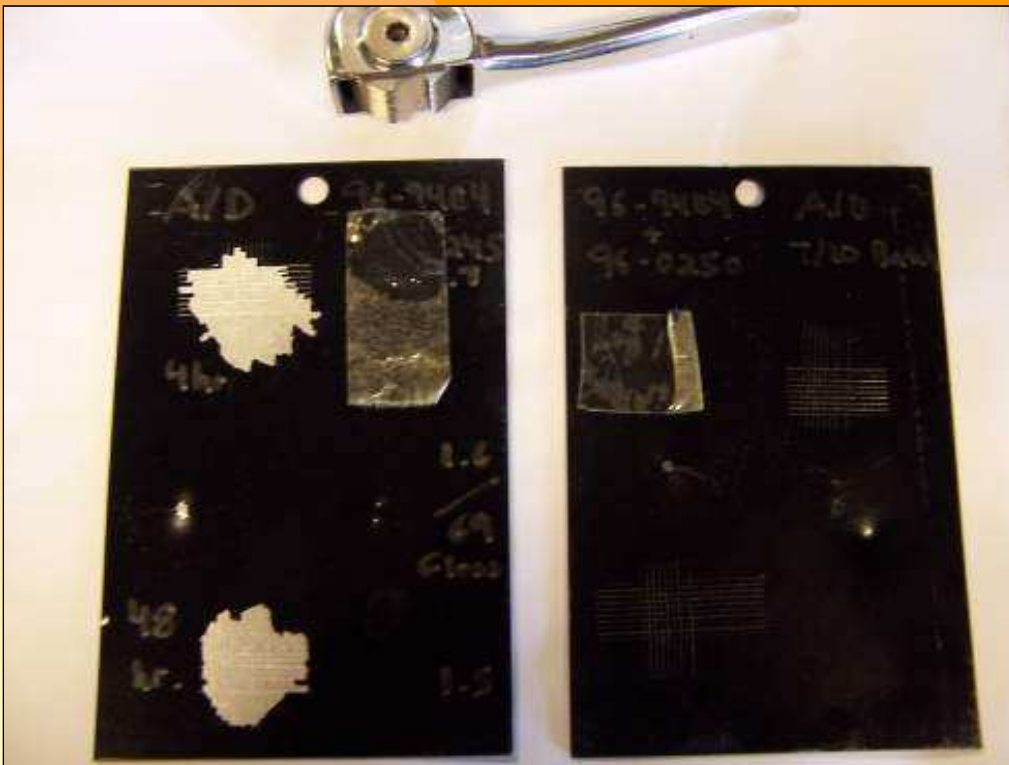
Wet



Dry

ADHESION TESTING

ASTM D 3350 Cross Cut and X Scribe



PAINT CLASSIFICATIONS

Waterborne

- a) solution
- b) emulsion

Solvent

- a) Hi-Solids

Two Component or 2K

- a) Urethane
- b) Epoxy

PAINT SYSTEM

- 1. Anti-Corrosion Primer**
- 2. Top Coat**

***PAIN**T DIFFERENCES*

500 Hour Salt Spray



Different Formulas



Different Results

IN SUMMARY

1.) Best Method of Minimizing Corrosion

a.) Choice of Materials

Plastic – Fiberglass – Aluminum – Stainless – Galvanized

2.) Best Methods of Combating Corrosion

a.) Proper Cleaning & Preparation

b.) Engineering & Design

- Be aware of the use of dissimilar metals. - Galvanic
- Reduce areas that trap and hold moisture. - Crevice
- Build proper drainage allowing coating to protect. - Uniform, Crevice & Pitting

c.) Choosing a quality paint system

Taking Care of Business



Competence is Key

